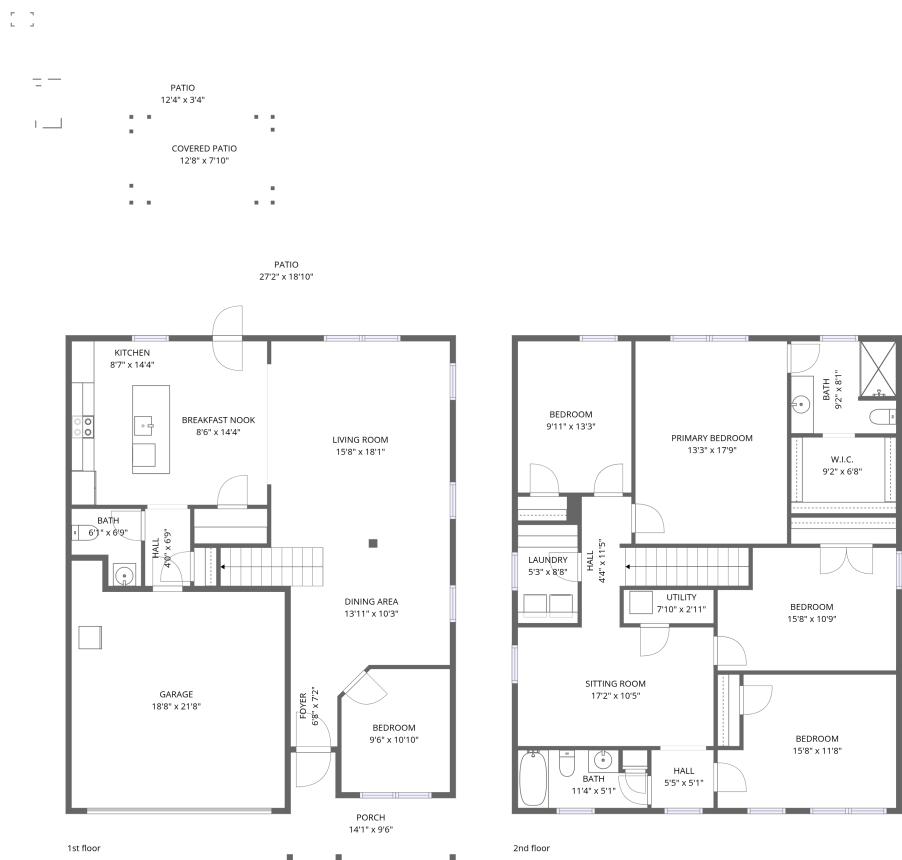


Home data report

2045 Atwell Glen Lane, Pineville, Mecklenburg County, North Carolina, United States, 28134



Total Area: 2410 sq. ft
1st Floor: 1007 sq. ft, 2nd Floor: 1403 sq. ft
Excluded: Porch 96 sq. ft, Patio 407 sq. ft, Covered patio 99 sq. ft, Garage 384 sq. ft, Utility 23 sq. ft

Property summary

**2**
Floors

**5**
Bedrooms

**2**
Bathrooms

Home data report

2045 Atwell Glen Lane, Pineville, Mecklenburg County, North Carolina, United States, 28134

 **1**
Half baths

 **1**
Garages

Home data report

2045 Atwell Glen Lane, Pineville, Mecklenburg County, North Carolina, United States, 28134



Room dimensions

Floor 1 Total:1007sqft Excluded: 986sqft

#		Dimensions	sqft	Counted as living area
1	Patio	12'4" x 3'4"	30 sq. ft	No
2	Breakfast Nook	8'6" x 14'4"	122 sq. ft	Yes
3	Hall	4'0" x 6'9"	27 sq. ft	Yes
4	Porch	14'1" x 9'6"	96 sq. ft	No
5	Kitchen	8'7" x 14'4"	123 sq. ft	Yes
6	Bath	6'1" x 6'9"	32 sq. ft	Yes
7	Dining Area	13'11" x 10'3"	164 sq. ft	Yes
8	Foyer	6'8" x 7'2"	33 sq. ft	Yes
9	Garage	18'8" x 21'8"	360 sq. ft	No
10	Covered Patio	12'8" x 7'10"	99 sq. ft	No
11	Bedroom	9'6" x 10'10"	99 sq. ft	Yes

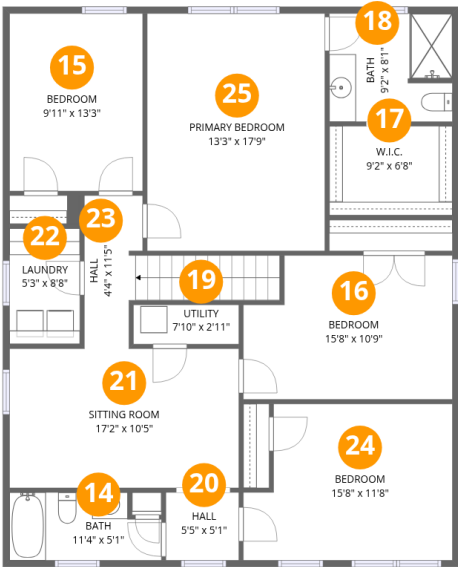
Home data report

2045 Atwell Glen Lane, Pineville, Mecklenburg County, North Carolina, United States, 28134

#		Dimensions	sqft	Counted as living area
12	Living Room	15'8" x 18'1"	283 sq. ft	Yes
13	Patio	27'2" x 18'10"	377 sq. ft	No

Home data report

2045 Atwell Glen Lane, Pineville, Mecklenburg County, North Carolina, United States, 28134



Room dimensions

Floor 2 Total:1403sqft Excluded: 23sqft

#		Dimensions	sqft	Counted as living area
14	Bath	11'4" x 5'1"	53 sq. ft	Yes
15	Bedroom	9'11" x 13'3"	132 sq. ft	Yes
16	Bedroom	15'8" x 10'9"	157 sq. ft	Yes
17	W.I.C.	9'2" x 6'8"	61 sq. ft	Yes
18	Bath	9'2" x 8'1"	73 sq. ft	Yes
19	Utility	7'10" x 2'11"	23 sq. ft	No
20	Hall	5'5" x 5'1"	28 sq. ft	Yes
21	Sitting Room	17'2" x 10'5"	178 sq. ft	Yes
22	Laundry	5'3" x 8'8"	45 sq. ft	Yes
23	Hall	4'4" x 11'5"	80 sq. ft	Yes
24	Bedroom	15'8" x 11'8"	168 sq. ft	Yes

Home data report

2045 Atwell Glen Lane, Pineville, Mecklenburg County, North Carolina, United States, 28134

#		Dimensions	sqft	Counted as living area
25	Primary Bedroom	13'3" x 17'9"	235 sq. ft	Yes

1 Floor 1 - Patio



Dimensions: 12'4" x 3'4"
Area: 30 sq. ft
Counted as living area: No

Heated: No
Finished: No
Enclosed: No
Contiguous: Yes
Permitted: Yes
Wet space: No
Addition: No
Conversion: No

2 Floor 1 - Breakfast Nook



Dimensions: 8'6" x 14'4"
Area: 122 sq. ft
Counted as living area: Yes

Heated: Yes
Finished: Yes
Enclosed: Yes
Contiguous: Yes
Permitted: Yes
Wet space: No
Addition: No
Conversion: No

3 Floor 1 - Hall



Dimensions: 4'0" x 6'9"
Area: 27 sq. ft
Counted as living area: Yes

Heated: Yes
Finished: Yes
Enclosed: Yes
Contiguous: Yes
Permitted: Yes
Wet space: No
Addition: No
Conversion: No

4 Floor 1 - Porch



Dimensions: 14'1" x 9'6"
Area: 96 sq. ft
Counted as living area: No

Heated: No
Finished: No
Enclosed: No
Contiguous: Yes
Permitted: Yes
Wet space: No
Addition: No
Conversion: No

5 Floor 1 - Kitchen



Dimensions: 8'7" x 14'4"
Area: 123 sq. ft
Counted as living area: Yes

Heated: Yes
Finished: Yes
Enclosed: Yes
Contiguous: Yes
Permitted: Yes
Wet space: No
Addition: No
Conversion: No

6 Floor 1 - Bath



Dimensions: 6'1" x 6'9"
Area: 32 sq. ft
Counted as living area: Yes

Heated: Yes
Finished: Yes
Enclosed: Yes
Contiguous: Yes
Permitted: Yes
Wet space: Yes
Addition: No
Conversion: No

7 Floor 1 - Dining Area



Dimensions: 13'11" x 10'3"
Area: 164 sq. ft
Counted as living area: Yes

Heated: Yes
Finished: Yes
Enclosed: Yes
Contiguous: Yes
Permitted: Yes
Wet space: No
Addition: No
Conversion: No

8 Floor 1 - Foyer



Dimensions: 6'8" x 7'2"
Area: 33 sq. ft
Counted as living area: Yes

Heated: Yes
Finished: Yes
Enclosed: Yes
Contiguous: Yes
Permitted: Yes
Wet space: No
Addition: No
Conversion: No

9 Floor 1 - Garage



Dimensions: 18'8" x 21'8"
Area: 360 sq. ft
Counted as living area: No

Heated: No
Finished: No
Enclosed: Yes
Contiguous: Yes
Permitted: Yes
Wet space: No
Addition: No
Conversion: No

10 Floor 1 - Covered Patio



Dimensions: 12'8" x 7'10"
Area: 99 sq. ft
Counted as living area: No

Heated: No
Finished: No
Enclosed: No
Contiguous: Yes
Permitted: Yes
Wet space: No
Addition: No
Conversion: No

11 Floor 1 - Bedroom



Dimensions: 9'6" x 10'10"
Area: 99 sq. ft
Counted as living area: Yes

Heated: Yes
Finished: Yes
Enclosed: Yes
Contiguous: Yes
Permitted: Yes
Wet space: No
Addition: No
Conversion: No

2045 Atwell Glen Lane, Pineville, Mecklenburg County, North Carolina, United States, 28134

12 Floor 1 - Living Room



Dimensions: 15'8" x 18'1"
Area: 283 sq. ft
Counted as living area: Yes

Heated: Yes
Finished: Yes
Enclosed: Yes
Contiguous: Yes
Permitted: Yes
Wet space: No
Addition: No
Conversion: No

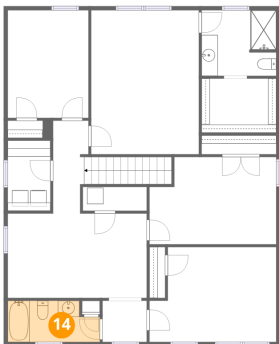
13 Floor 1 - Patio



Dimensions: 27'2" x 18'10"
Area: 377 sq. ft
Counted as living area: No

Heated: No
Finished: No
Enclosed: No
Contiguous: Yes
Permitted: Yes
Wet space: No
Addition: No
Conversion: No

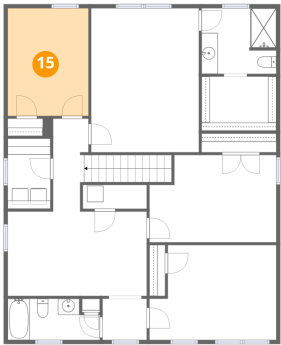
14 Floor 2 - Bath



Dimensions: 11'4" x 5'1"
Area: 53 sq. ft
Counted as living area: Yes

Heated: Yes
Finished: Yes
Enclosed: Yes
Contiguous: Yes
Permitted: Yes
Wet space: Yes
Addition: No
Conversion: No

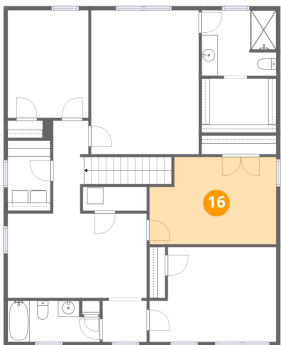
15 Floor 2 - Bedroom



Dimensions: 9'11" x 13'3"
Area: 132 sq. ft
Counted as living area: Yes

Heated: Yes
Finished: Yes
Enclosed: Yes
Contiguous: Yes
Permitted: Yes
Wet space: No
Addition: No
Conversion: No

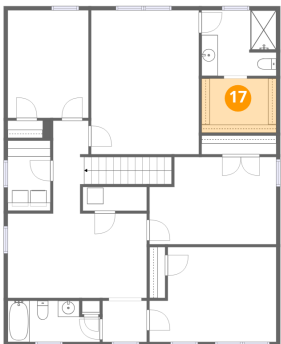
16 Floor 2 - Bedroom



Dimensions: 15'8" x 10'9"
Area: 157 sq. ft
Counted as living area: Yes

Heated: Yes
Finished: Yes
Enclosed: Yes
Contiguous: Yes
Permitted: Yes
Wet space: No
Addition: No
Conversion: No

17 Floor 2 - W.I.C.

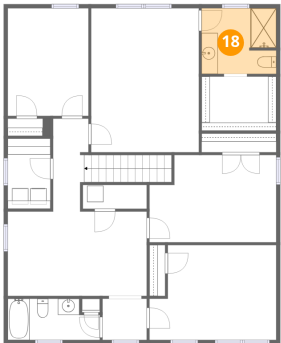


Dimensions: 9'2" x 6'8"
Area: 61 sq. ft
Counted as living area: Yes

Heated: Yes
Finished: Yes
Enclosed: Yes
Contiguous: Yes
Permitted: Yes
Wet space: No
Addition: No
Conversion: No

2045 Atwell Glen Lane, Pineville, Mecklenburg County, North Carolina, United States, 28134

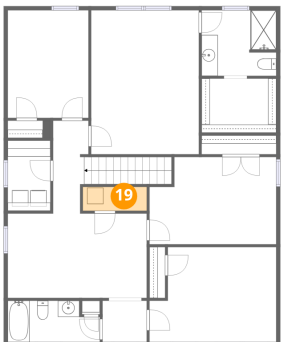
18 Floor 2 - Bath



Dimensions: 9'2" x 8'1"
Area: 73 sq. ft
Counted as living area: Yes

Heated: Yes
Finished: Yes
Enclosed: Yes
Contiguous: Yes
Permitted: Yes
Wet space: Yes
Addition: No
Conversion: No

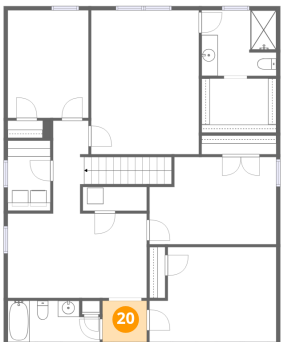
19 Floor 2 - Utility



Dimensions: 7'10" x 2'11"
Area: 23 sq. ft
Counted as living area: No

Heated: Yes
Finished: No
Enclosed: Yes
Contiguous: Yes
Permitted: Yes
Wet space: No
Addition: No
Conversion: No

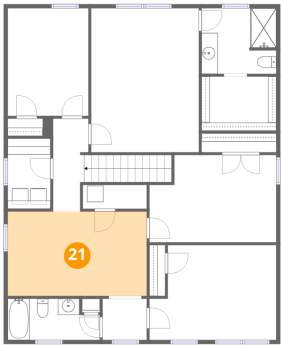
20 Floor 2 - Hall



Dimensions: 5'5" x 5'1"
Area: 28 sq. ft
Counted as living area: Yes

Heated: Yes
Finished: Yes
Enclosed: Yes
Contiguous: Yes
Permitted: Yes
Wet space: No
Addition: No
Conversion: No

21 Floor 2 - Sitting Room



Dimensions: 17'2" x 10'5"
Area: 178 sq. ft
Counted as living area: Yes

Heated: Yes
Finished: Yes
Enclosed: Yes
Contiguous: Yes
Permitted: Yes
Wet space: No
Addition: No
Conversion: No

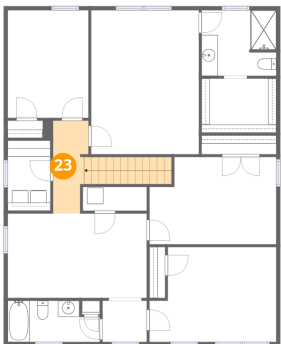
22 Floor 2 - Laundry



Dimensions: 5'3" x 8'8"
Area: 45 sq. ft
Counted as living area: Yes

Heated: Yes
Finished: Yes
Enclosed: Yes
Contiguous: Yes
Permitted: Yes
Wet space: No
Addition: No
Conversion: No

23 Floor 2 - Hall

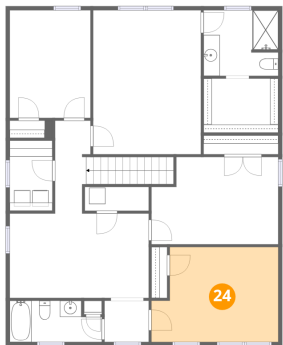


Dimensions: 4'4" x 11'5"
Area: 80 sq. ft
Counted as living area: Yes

Heated: Yes
Finished: Yes
Enclosed: Yes
Contiguous: Yes
Permitted: Yes
Wet space: No
Addition: No
Conversion: No

2045 Atwell Glen Lane, Pineville, Mecklenburg County, North Carolina, United States, 28134

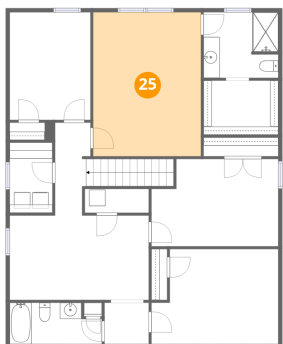
24 Floor 2 - Bedroom



Dimensions: 15'8" x 11'8"
Area: 168 sq. ft
Counted as living area: Yes

Heated: Yes
Finished: Yes
Enclosed: Yes
Contiguous: Yes
Permitted: Yes
Wet space: No
Addition: No
Conversion: No

25 Floor 2 - Primary Bedroom



Dimensions: 13'3" x 17'9"
Area: 235 sq. ft
Counted as living area: Yes

Heated: Yes
Finished: Yes
Enclosed: Yes
Contiguous: Yes
Permitted: Yes
Wet space: No
Addition: No
Conversion: No